



Civil Protection in Germany



Information for operators of critical infrastructures

- Responsibilities
- Structures
- Points of contact



“The protection of its citizens from hazards is one of the most supreme tasks of a modern state.”

This serves as the guiding principle for anyone involved in civil protection. Natural disasters, industrial accidents, epidemic plagues and the dangers posed by international terrorism affect not only government institutions but also operators of critical infrastructures.

The following list contains important terms and their definition according to the Federal Office of Civil Protection and Disaster Assistance (Bundesamt für Bevölkerungsschutz und Katastrophenhilfe; BBK):

Civil protection	Any civilian measure taken to protect the population and its livelihood from the impact of wars, armed conflicts, disasters and other major emergencies as well as any measure taken to prevent, mitigate the impact of and cope with these events.
Critical infrastructures	Organisations and institutions of special importance for a nation and its people whose failure or impairment would result in sustained supply shortages, significant disruption of public safety and security or other dramatic consequences.
Disaster	As defined by the laws of the German states, a disaster is an event of such magnitude that it exceeds the everyday resources of the emergency response community.
Crisis	Any deviation from the normal state of affairs with the potential to cause damage to critical assets which exceeds the everyday resources of a nation's organisational system and processes.
Crisis management	Any measure taken to prevent, prepare for, identify and cope with crises including post-event analysis.

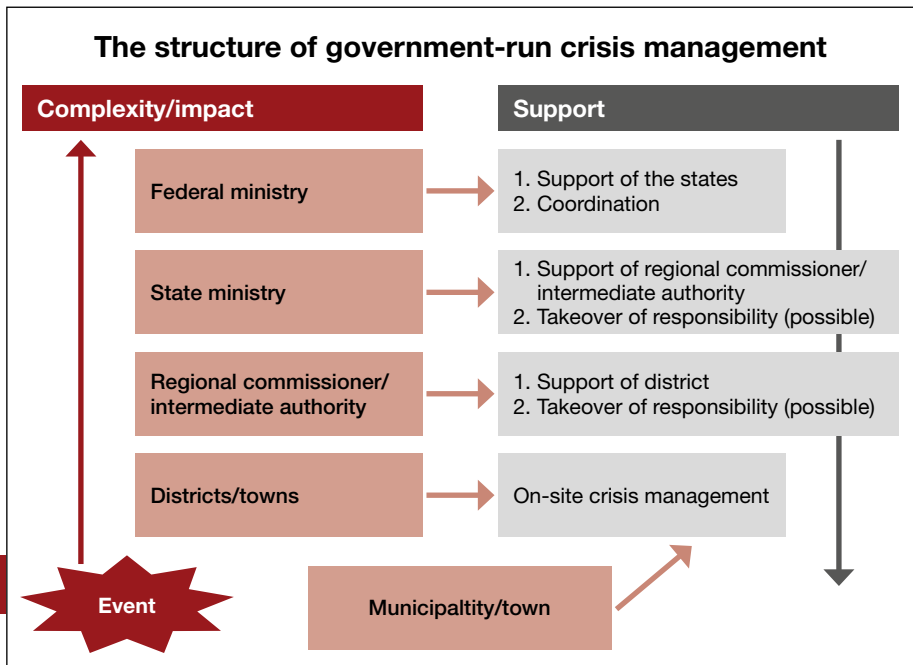
Who are the stakeholders?

Ensuring the safety and security of the population is a common task. It requires co-operation of all branches of the public administration from the municipality up to the national level and brings in the private sector, particularly operators of critical infrastructures.

Levels of responsibility:

- Companies take precautionary measures against hazard incidents in order to protect people and maintain or restore infrastructure service to a safe condition.
- Government-run civil protection is the responsibility of the emergency management agencies that are in charge of and coordinate operations in the event of a disaster.
- The German states discharge central tasks and coordinate measures in extraordinary situations.
- The German government exercises functions before an event, in case of a widespread event or events of national significance by providing information, expertise and resources.
- In a state of tension and defence, the German government assumes control of government-run civil protection.

Who is involved? – Structures in civil protection

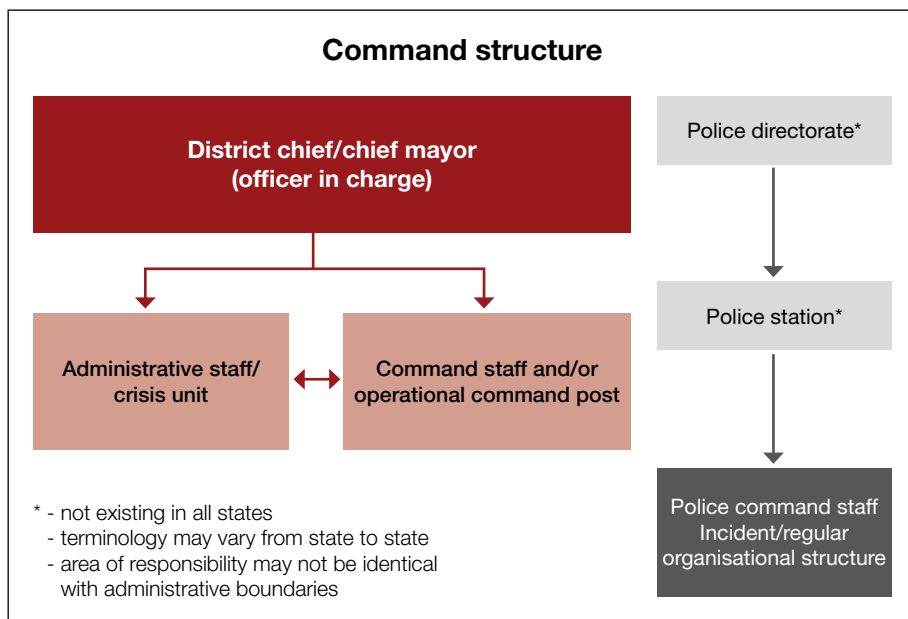


The level of the districts and independent towns

In political terms, the district chiefs/chief mayors are responsible for crisis management. They are supported by a **management staff**, which is to be established in case of an emergency, in the discharge of administrative duties and by a **command staff/operational command post**¹⁾. The event at hand determines the composition of these staffs. Experts from companies operating critical infrastructures or other experts may be brought in if the situation requires.

The organisational structure of these staff varies from state to state.

1) See German Fire Brigade Service Regulation FwDV 100.



Involvement of the administrative staff may already begin at a level where it is not yet necessary for a command staff or an operational command post to be established or take action (e.g. preparation for floods/pandemics) or if

- there is a need for coordinated cooperation between a number of government agencies and operators
- there is a need for a coordinated multi-agency public information campaign
- a large diversity of information needs to be assessed in order to enable coordinated decision making
- public interest is such that crisis communication needs to be coordinated across the various branches of government.

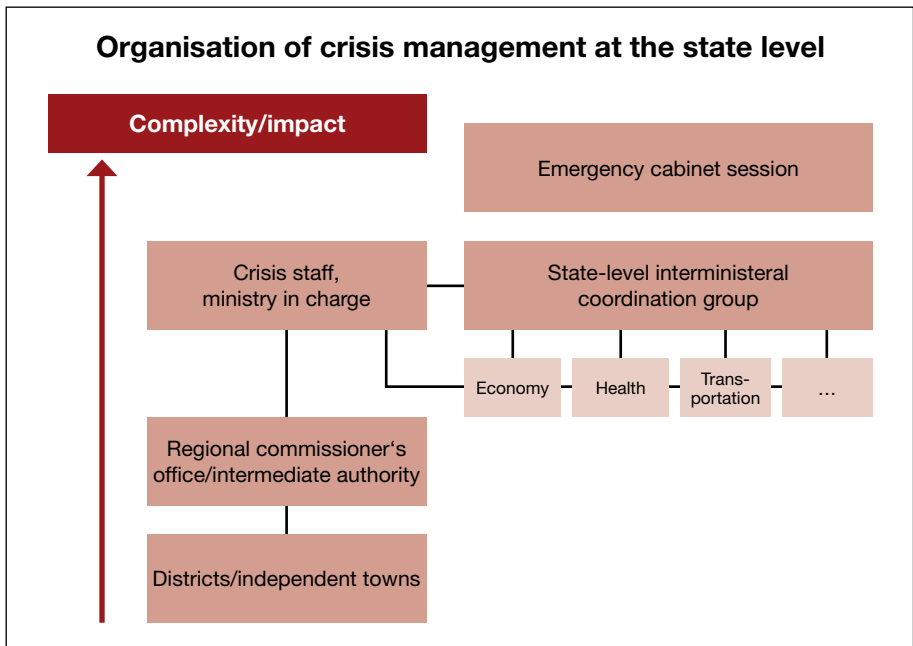
Composition of an administrative staff at the district level

Internal		External	
Permanent	As required	Authorities/ panels	Companies
<ul style="list-style-type: none"> - public order - fire brigade - civil protection - health - social issues - environment - public information and media affairs 	<p style="text-align: center;">Other organisational elements of an authority</p>	<p>Experts, liaison personnel</p> <p>(e.g. police, German Armed Forces, THW, neighbouring district administration)</p>	<p>Experts, third parties, utility providers (power, gas, water)</p> <p>DB AG, ÖPNV, banks, clinics, retailers, airport/port operators, etc.</p>

The level of the German states

The German states have used their legislative competence and passed laws in order to regulate civil protection. These state laws established different structures for command and control, training, and equipment and materiel. Companies which operate critical infrastructures in more than one German state need to be aware that organisational structures at the level of the districts and independent towns, at the level of intermediate authorities (e.g. regional commissioner's office, state administrative office, police directorate) and at the level of the ministries may vary from state to state. Companies should take this into consideration for their crisis and emergency planning.

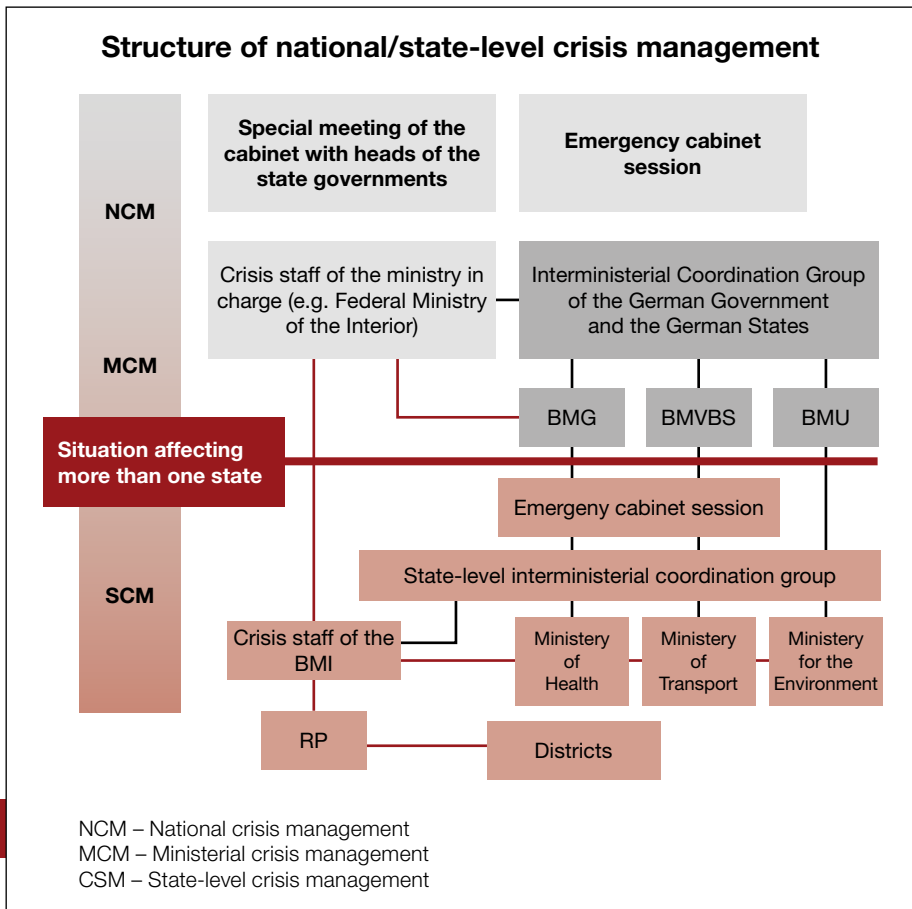
If the magnitude of a crisis is such that the state government needs to be brought in, interministerial crisis staffs may be established in order to coordinate among the individual ministries. Experts from the companies operating critical infrastructures may, if required, be invited to join these crisis staffs.



The national level

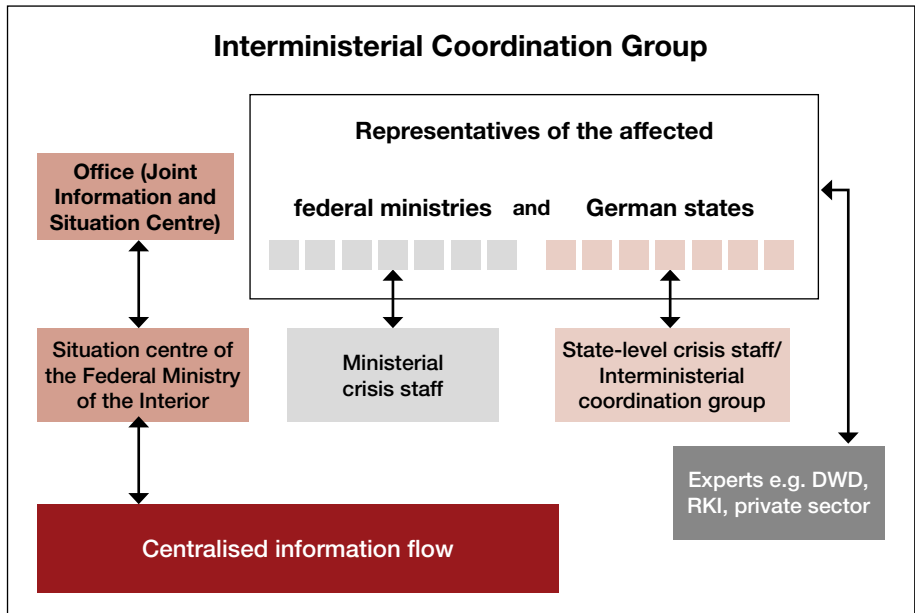
As part of national crisis management, the crisis staff of the federal ministry in charge ensures situation-related coordination of federal government activities as well as coordination with the states involved. If more than one state and more than one federal ministry is affected, an interministerial (joint) crisis staff is established in order to pool the different interests. If a pandemic breaks out, a joint crisis staff established by the Federal Ministry of the Interior and the Federal Ministry of Health may propose a uniform course of action.

The following image shows the structure of national/state-level crisis management.



Interministerial Coordination Group

The Interministerial Coordination Group of the German Government and the German States is an advisory body, bringing together representatives from the German government and the German states. It pools all affected ministries at the national and state level and, as required, experts from companies operating e.g. critical infrastructures. Using its expertise, the Group is to formulate proposals to enable decision making in the crisis management community of the German government and the German states.



Points of contact

Points of contact in the districts and independent towns:

For initial information you should contact your municipality, town or district administration. Their staff in charge of public security and order (e.g. public order office) should be your initial point of contact.

For information on the internet, please visit www.kreisnavigator.de and www.kommon.de.

Points of contact at the level of the German states

The ministry of the interior of the individual German states should be your initial point of contact.

Points of contact at the national level

The Federal Ministry of the Interior should be your initial point of contact
<http://www.bmi.bund.de>



View of the German Joint Information and Situation Centre

Information on personal crisis and disaster preparedness

The interaction of the structures previously outlined is subject to constant assessment and evaluation. To this end, municipalities, the German states and the German government offer training and further education courses for all echelons and conduct crisis management exercises. These courses and exercises are open to operators of critical infrastructures.

For the national level, the Federal Office of Civil Protection and Disaster Assistance organises seminars and workshops for executive personnel up to top-level management.

During strategic crisis management training, the Federal Office of Civil Protection and Disaster Assistance implements the LÜKEX system (cross-state crisis management exercise) (www.luekex.de). This system focuses on reviewing the individual nationwide disaster preparedness systems that have been put in place to protect the population. Training focuses on teaching, practicing and reviewing the effective coordination of necessary measures to be taken by the authorities and private-sector operators of critical infrastructures in face of extraordinary damage or hazards.

If you think this applies to you, please contact the relevant government office.

For further information, please refer to volume 1 of the publication series “Praxis im Bevölkerungsschutz” entitled “Nationales Krisenmanagement im Bevölkerungsschutz” (published by The Federal Office of Civil Protection and Disaster Assistance, Oct 2008) or visit the following websites:

www.bmi.bund.de

www.bbk.bund.de

www.bevoelkerungsschutz.de

www.bevoelkerungsschutz-portal.de

www.katastrophenvorsorge.de

List of abbreviations

BMG	Bundesministerium für Gesundheit (Federal Ministry of Health)
BMI	Bundesministerium des Innern (Federal Ministry of the Interior)
BMU	Bundesministerium für Umwelt, Naturschutz und Reaktorsicherheit (Federal Ministry for the Environment, Nature Conservation and Nuclear Safety) Nuclear Safety ()
BMVBS	Bundesministerium für Verkehr, Bau und Stadtentwicklung (Federal Ministry of Transport, Building and Urban Development)
DB AG	Deutsche Bahn Aktiengesellschaft (German Railways)
DWD	Deutscher Wetterdienst (National Meteorological Service)
System-LÜKEX	“LÜKEX” Länderübergreifende Krisenmanagementübung/ Exercise (seminars, workshops, presentations held in order to promote cross-state crisis management exercises)
ÖPNV	Öffentlicher Personennahverkehr (public transportation)
RP	Regierungspräsidium (regional commissioner, intermediate authority)
RKI	Robert Koch Institute
THW	Bundesanstalt Technisches Hilfswerk (German Federal Agency for Technical Relief)

Capabilities in the field of civil protection

In response to new threats like 9/11 and the flood of 2002, the Federal Office of Civil Protection and Disaster Assistance was established on 1 May 2004. With this Office, the Federal Republic of Germany has a centralised capability to organise civil protection. It takes into consideration all areas of civil disaster preparedness across the board and integrates them into an effective mechanism in order to protect the population and its livelihood. The Federal Office of Civil Protection and Disaster Assistance is not just a technical authority of the Federal Ministry of the Interior but provides professional advice and support to the other state-level and national authorities in their daily work.

It is **the** central authority responsible for

- all tasks related to national-level civil protection and coordination of international cooperation,
- the preparation of national and sector-based risk analyses, hazard mapping and crisis prevention planning as well as the coordination of civil-military-police cooperation,
- conceptual planning and interdisciplinary coordination of the protection of critical infrastructures,
- national information, communications and resources management in the event damage occurs,
- the coordination of scientific and technical research in the field of civil protection as well as the protection of the population from weapons of mass destruction,
- the training of top-level government officials in the field of civil protection as required by the threat situation,
- national coordination of the European integration process in the field of civil preventive security,
- medical civil protection,
- the procurement of equipment and materiel for disaster assistance tasks in the field of civil protection.

For further information please contact

Bundesamt für Bevölkerungsschutz
und Katastrophenhilfe (BBK)
Provinzialstrasse 93
53127 Bonn
Postfach 1867
53008 Bonn
Telefon: +49(0)228-99550-0
Homepage: www.bbk.bund.de
E-Mail: poststelle@bbk.bund.de

